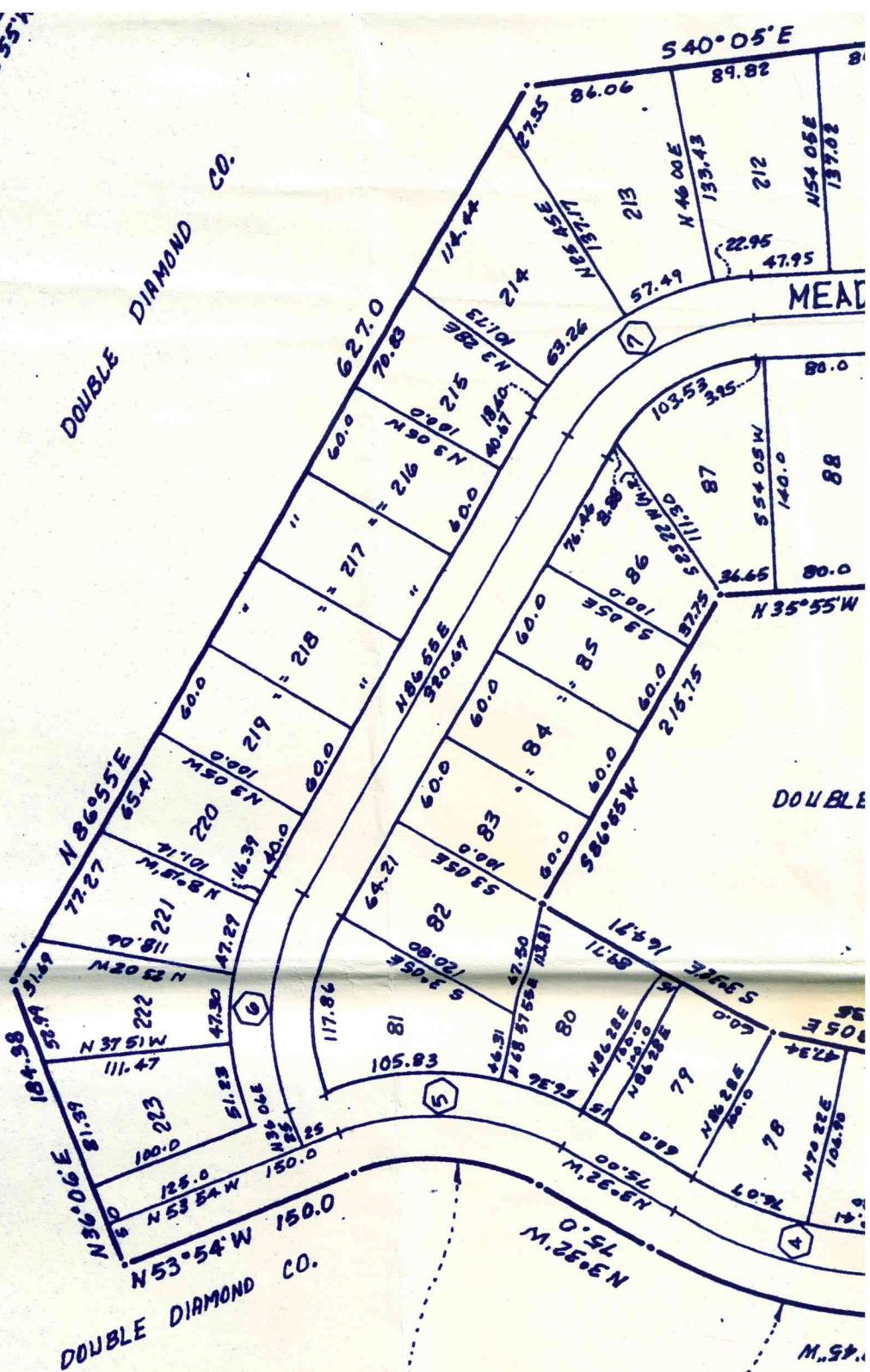


E STREET CURVE DATA

NO.	Δ	RADIUS	LENGTH	TANGENT	CHORD
4	28°27'45"	295.72	146.70	75.00	N17°45'52"W - 145.40
5	50°22'00"	157.60	140.21	75.00	N28°45'00"W - 135.74
6	50°47'00"	157.87	140.04	75.00	N61°30'30"E - 135.47
7	57°10'00"	157.66	137.36	75.00	S64°30'00"E - 131.72
12	15°55'00"	526.48	147.03	75.00	N36°07'30"W - 149.56
13	31°57'50"	174.39	97.39	50.00	N66°04'55"W - 76.13
14	27°00'10"	267.74	98.88	50.00	N82°34'55"W - 78.33



$\Delta = 50^{\circ}22'$
 $R = 134.50$
 $L = 118.24$
 $CH = N28^{\circ}43'W$
 114.47

$\Delta = 28^{\circ}27'45''$
 $R = 320.72$
 $L = 159.32$
 $CH = N17^{\circ}45'52''W$
 157.69

